



# Concerts in Motion

We bring kindness with  
concerts for the homebound,  
isolated, and infirm



# ANNUAL

# REPORT

# 2020



# CONCERTS IN MOTION

PO Box 231097 New York, NY 10023

(212) 498 9868

info@concertsinmotion.org

www.concertsinmotion.org

---

## OUR MISSION

is to provide uplifting music and engagement for older adults, veterans, individuals with disabilities, individuals with mental illness, individuals experiencing housing and food insecurity, and hospitalized patients of all ages in the New York area.

We aim to relieve social isolation.



## DEAR FRIENDS,

One of the joys of preparing an annual report is that it gives us the opportunity to look back and be thankful for all that we have been able to provide in the community. 2020 presented unprecedented challenges, but our transition to virtual programming allowed us to double our reach and relieve isolation for more individuals than ever before—without compromising concert quality or participant safety.

We are proud to share the following highlights of the last fiscal year.

# CONCERTS IN MOTION

PO Box 231097 New York, NY 10023

(212) 498 9868

info@concertsinmotion.org

www.concertsinmotion.org

---

## 2020 HIGHLIGHTS

### In March 2020, we launched Virtual Visiting Series concerts

and were quickly able to return to serving between **700 and 800** isolated people a week with the music they love most.

These concerts featured interactive performances by both professional and youth musicians and were designed to relieve isolation.

Virtual Visiting Series concerts **do not require internet access** of its audience members, as the series is accessible by phone.



### Our virtual concerts have become so beloved

that **we will continue to offer virtual programs** even when in-person concerts are safe to resume.

# CONCERTS IN MOTION

PO Box 231097 New York, NY 10023

(212) 498 9868

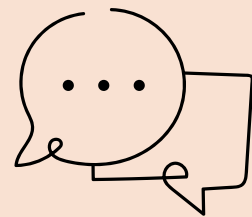
info@concertsinmotion.org

www.concertsinmotion.org

---

## We expanded our agency partnerships

to include **100+ organizations** and social service agencies who serve the most vulnerable.



## We employed over 100 professional musicians

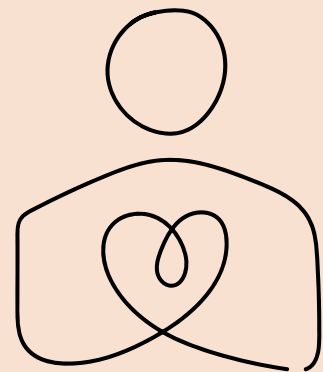
and provided quarterly training in the **Person-Centered, Trauma-Informed Care** approach, deepening our ability to provide programs that meet the needs of our community members.

New musicians even joined our roster, expanding our range of genre and language offerings.

## Student volunteers led the charge to launch virtual concerts.

We worked with **211 student musicians** age 5-22 who are currently studying music, who brought their kindness and music to isolated older adults.

We honored **eight of these exceptional student leaders** at our annual Spring Celebration.



# CONCERTS IN MOTION

PO Box 231097 New York, NY 10023

(212) 498 9868

info@concertsinmotion.org

www.concertsinmotion.org

---



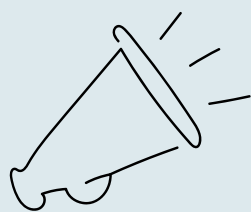
## Our pivot to virtual concerts increased opportunities for students

to participate in the youth program, as **geography is no longer an obstacle** to participation.

Our youth program now represents **92 schools**, representing greater geographic, economic, and cultural diversity than ever before.

## We premiered the PEAK Program

(Performance, Education, Access, Knowledge), a **free enrichment program** to qualifying school groups, partnering with Exploring the Arts and Opportunity Music Project to serve **41 students** in the summer and fall of 2020.



We presented  
and served  
in 2020.

924 concerts

40,000+ people

# CONCERTS IN MOTION

PO Box 231097 New York, NY 10023

(212) 498 9868

info@concertsinmotion.org

www.concertsinmotion.org



The following is an overview of Concert's in Motion income and expenses for the fiscal year ended December 31st, 2020.

Unrestricted Net Assets:

## REVENUE AND PUBLIC SUPPORT

GRANT INCOME	\$274,950
DONATIONS AND GENERAL SUPPORT	94,757
PROGRAM FEES	32,525
GALA INCOME	228,497
INTEREST AND MISCELLANEOUS INCOME	1,478
NET ASSETS RELEASED FROM RESTRICTION	381,385
TOTAL REVENUE AND PUBLIC SUPPORT	\$1,013,592

## EXPENSES

PROGRAM EXPENSES:	
GENERAL PROGRAMMING EXPENSES	\$430,579
OTHER PROGRAM EXPENSES	195,684
TOTAL PROGRAM EXPENSES:	626,263
GENERAL AND ADMINISTRATIVE EXPENSES	117,634
FUNDRAISING EXPENSES	95,981
TOTAL EXPENSES	\$839,878

TOTAL ASSETS	\$1,197,760
TOTAL LIABILITIES	129,988
ENDING NET ASSETS	\$1,067,772



# CONCERTS IN MOTION

PO Box 231097 New York, NY 10023

(212) 498 9868

info@concertsinmotion.org

www.concertsinmotion.org

---

## BOARD OF DIRECTORS

Deborah Korzenik, Esq.	Co-President
Rhett Brandon, Esq.	Co-President
Susan Kurz Snyder, Esq.	Vice President
Dr. David Muller	Vice President
Joseph H. Girven	Treasurer and Secretary
Shari Brooks	Director
Thomas Oh	Director
Navah Perlman Frost	Director
Ronnie Ellen Raymond	Director
Monica Rich Kosann	Director
Doris Ullendorff	Director
Jennifer Finn	Founder and Executive Director

